

Certified Secure Computer User (cscu)

Duration- 3 days

Course Overview

The Certified Secure Computer User (CSCU) is an entry-level certification that focuses on security. trainee of this certification have acquired fundamental understanding of various com-

puter and network security threats like Online security, Credit card fraud, Identity theft, Hacking attacks, Disaster Recovery, Virus and backdoors, Encryption.

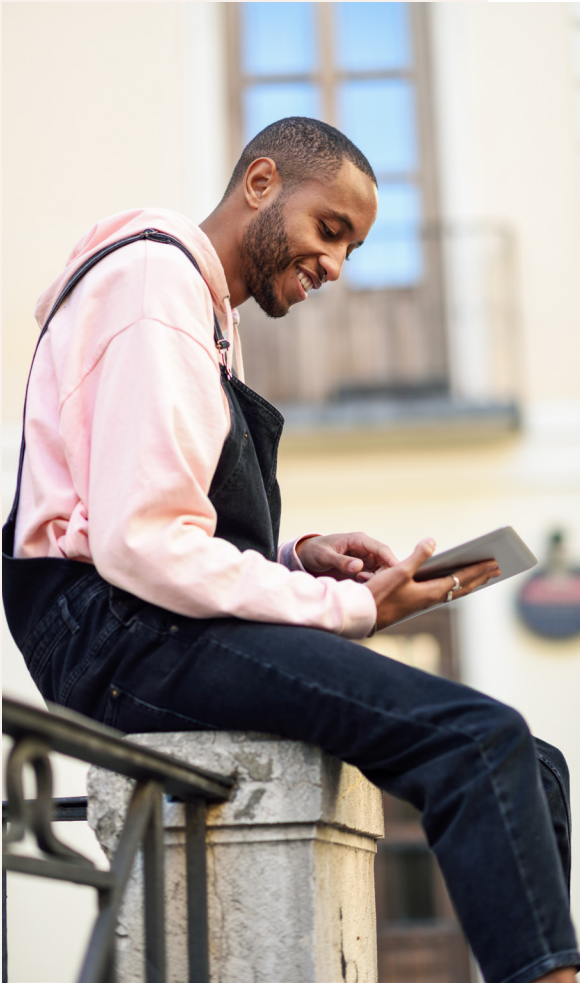
What you will learn.

You will learn how to secure network connection, secure Operation system, Compliance and operational security and Access control & identity management.

Who is this course for?

This course is specifically designed for student who want to acquire fundamen-





- Securing Mobile Devices
- Securing the Cloud
- Securing Network Connections
- Data Backup and Disaster Recovery
-

tal understanding of computer and network security threats.

Course Outline

- Introduction to Data Security
- Securing Operating Systems
- Malware and Antiviruses
- Internet Security
- Security on Social Networking Sites
- Securing Email Communications