

20-345 – Administering Exchange Server 2016

Duration- 5 days

Course Overview

This course teaches you how to administer and support Exchange Server 2016. You will learn how to install Exchange Server 2016 as well as how to configure and manage an Exchange Serv-

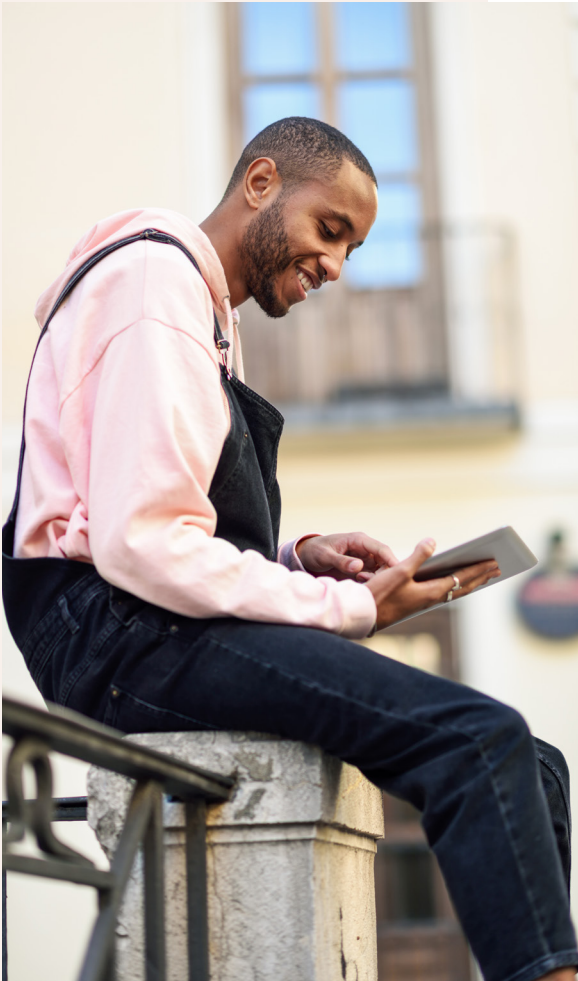
er environment.

What you will learn.

This course will teach you how to:

- Monitor and maintain Exchange Server 2016.
- Administer Exchange Online in Office 365 deployments.
- Create and manage recipient objects and automate Exchange management procedures.
- Configure and manage message transport.
- Learn to use Exchange Management Shell for managing recipient objects.
- Secure and maintain Exchange Server.
- Understand the latest





features and functionalities of this new version.

- Configure Outlook and mobile messaging.
- Manage mail recipients and public folders, including how to perform bulk operations using Exchange Management Shell.

Who is this course for?

The audience for this course are

for Exchange Server 2016 administrators and IT generalists and help-desk professionals.

Requirement

Student should have:

- Minimum of two years of experience administering Windows Server.
- Minimum of two years of experience working with Active Directory Domain Services (AD DS).
- Minimum of two years of experience working with name resolution, including Domain Name System (DNS).

Module 1: Deploying Exchange Server

Lessons

- Overview of Exchange Server
- Exchange Server architecture
- Requirements for Exchange Server
- Deploying Exchange Server Exchange Server
- Exchange Server Management Tools



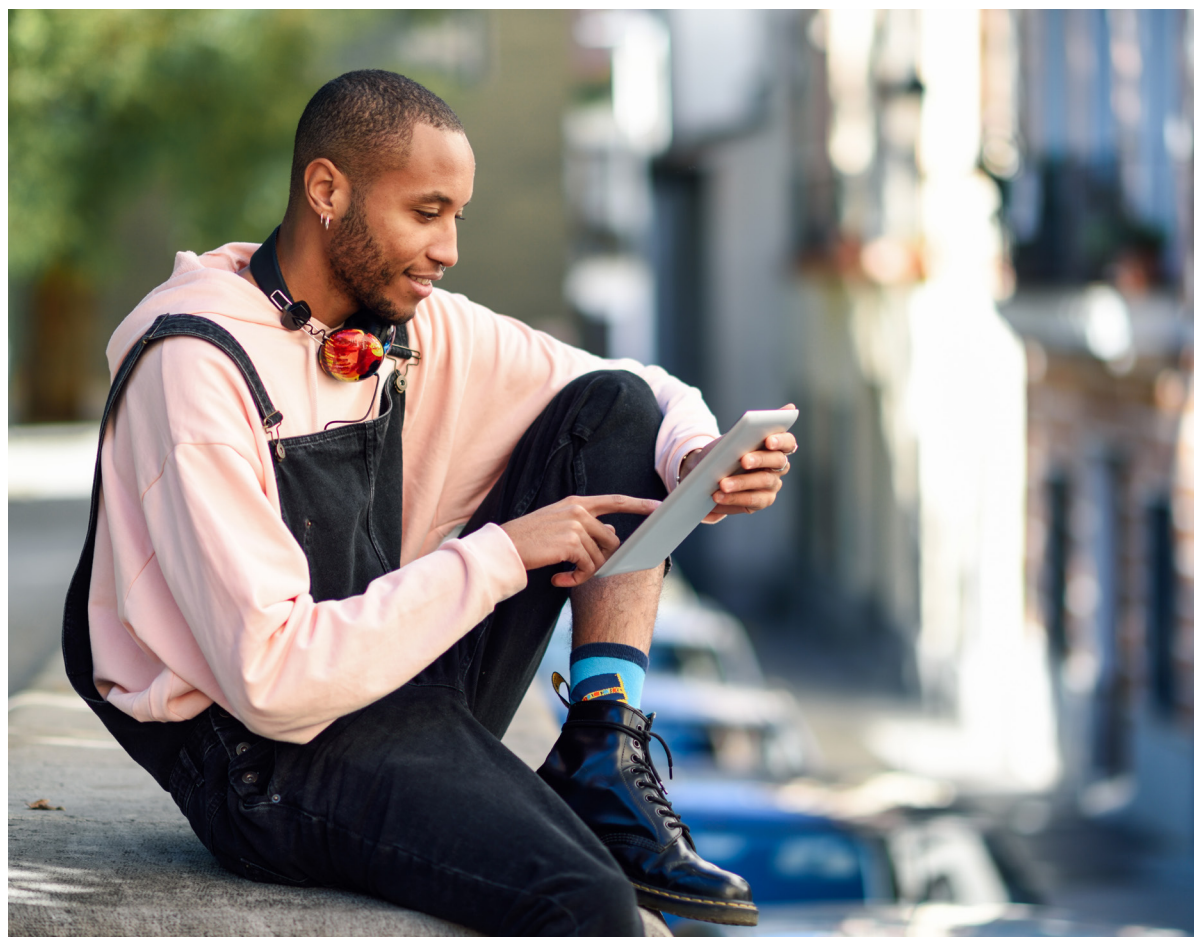
Lab: Deploying Exchange Server

- Evaluating requirements and prerequisites for an Exchange Server 2019 installation
- Deploying Exchange Server 2019
- Verifying Exchange Server functionality

- Installing Exchange Server 2019 on Windows Server Core 2019 (optional)

After completing this module, students will be able to:

- Describe the key features and functionality of Exchange Server
- Describe the Exchange Server architecture
- Describe the requirements and options for deploying Exchange Server
- Deploy Exchange Server
- Describe how to use management tools to manage Exchange





Module 2: Managing Exchange Server 2016 storage

Lessons

- Exchange Server mailbox databases
- Exchange Server storage
- Configuring Exchange Server mailbox databases and storage

Lab: Configuring Exchange Server storage

- Creating and configuring mailbox databases

After completing this module, students will be able to:

- Describe the features of Exchange Server mailbox databases
- Explain the storage options available for Exchange Server
- Configure Exchange Server mailbox databases and storage

Module 3: Managing recipient objects

Lessons

- Managing user mailboxes

- Managing other types of mailboxes
- Managing other recipients objects
- Configuring policies and address lists

Lab: Managing recipient objects

- Configuring recipient objects
- Managing public folder mailboxes

Lab: Configuring address lists and policies

- Managing email-address policies
- Managing address lists and address book policies

After completing this module, students will be able to:

- Manage user mailboxes in Exchange Server
- Manage shared, resource, public folder, and arbitration mailboxes in Exchange Server
- Manage contacts, mail users, and distribution groups in Exchange Server
- Configure address lists, and email address and address



book policies in Exchange Server

- Manage Exchange servers by using scripts

Module 4: Managing recipients and Exchange servers by using Exchange Server cmdlets

Lessons

- Overview of the Exchange Management Shell
- Managing Exchange Servers by using Exchange Management Shell cmdlets
- Managing Exchange servers by using scripts

Lab: Managing Exchange Server and recipient objects by using Exchange Management Shell

- Using Exchange Management Shell to manage recipients
- Using Exchange Management Shell to manage Exchange Server

After completing this module, students will be able to:

- Manage recipients by using Exchange Server cmdlets
- Manage Exchange servers by using Exchange Server cmdlets

Module 5: Implementing client connectivity

Lessons

- Configuring client access services
- Managing client access services
- Client connectivity in Exchange Server
- Configuring Outlook on the web
- Configuring mobile messaging

Lab: Configuring client access services

- Configuring certificates for client access
- Configuring certificates for client access
- Configuring custom Mail-Tips

Lab: Deploying and configuring client access services on Exchange Server

- Configuring Exchange Server for Outlook
- Configuring Outlook on the web



LASU CBT 18

- Configuring Microsoft Exchange ActiveSync

After completing this module, students will be able to:

- Configure client access services in Exchange Server
- Manage client services
- Describe client connectivity and publishing of Exchange Server services
- Configure Outlook on the web
- Configure mobile messaging on Exchange Server

Module 6: Managing high availability in Exchange Server

Lessons

- High availability on Exchange Server
- Configuring highly available mailbox databases
- Configuring high availability of Client Access services.

Lab: Implementing DAGs

- Creating and configuring a DAG

Lab: Implementing and testing high availability

- Deploying a high availability solution for client access

services

- Testing the high availability configuration

After completing this module, students will be able to:

- Describe the high availability options in Exchange Server
- Configure highly available mailbox databases
- Configure highly available client access services

Module 7: Implementing disaster recovery for Microsoft Exchange Server

Lessons

- Implementing Exchange Server backup
- Implementing Exchange Server recovery

Lab: Backing up Exchange Server data

- Backing up an Exchange Server mailbox database

Lab: Restoring Exchange Server data

- Restoring Exchange Server mailbox
- Restore an Exchange Server DAG member (optional)



After completing this module, students will be able to:

- Back up Exchange Server data
- Restore Exchange Server data by using the configured backups

Module 8: Configuring and managing message transport Lessons

- Overview of message transport
- Configuring message transport
- Managing transport rules

Lab: Configuring and managing message transport

- Configuring message transport
- Monitoring and verifying message delivery
- Configuring a disclaimer transport rule
- Configuring a DLP policy for financial data

After completing this module, students will be able to:

- Describe messaging transport in Exchange Server
- Configure message trans-

port in Exchange Server

- Manage transport rules in Exchange Server